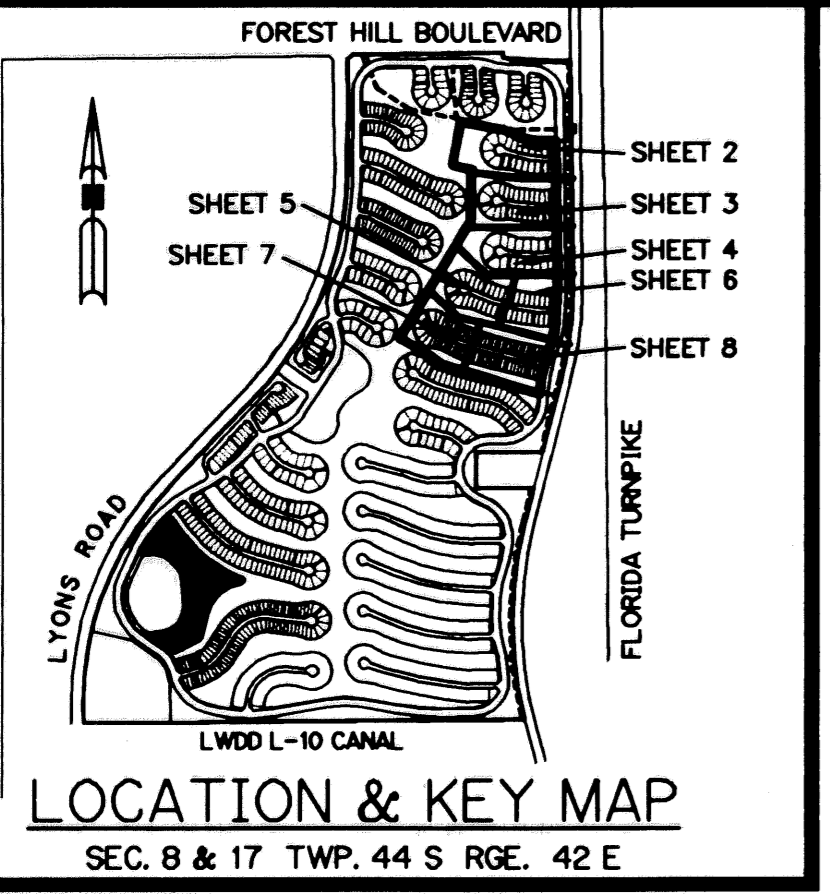


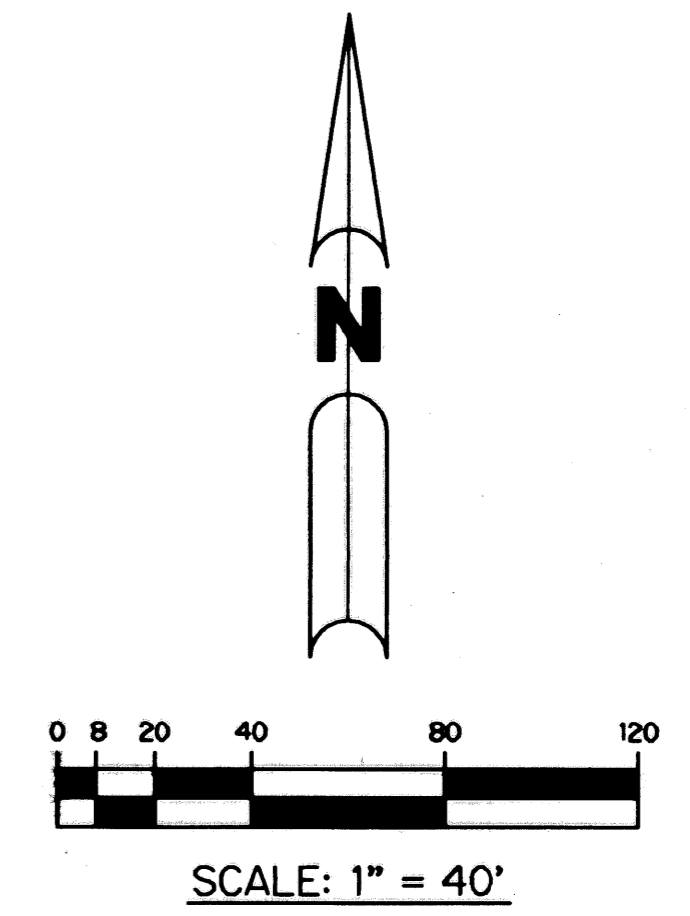
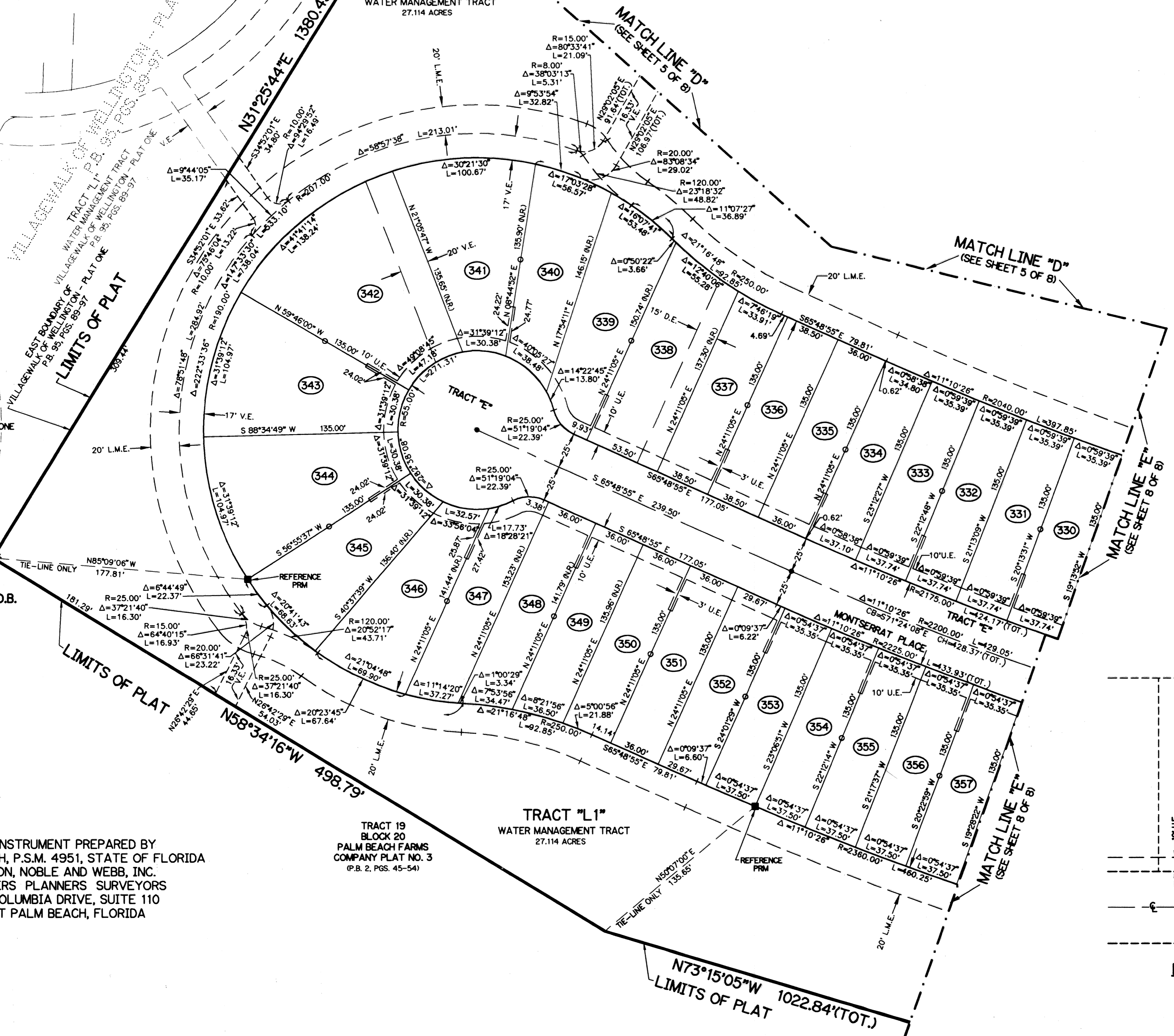
VILLAGEWALK OF WELLINGTON - PLAT THREE

BEING A REPLAT OF A PORTION OF TRACTS 62, 63 AND 64, BLOCK 16, A PORTION OF TRACTS 1, 3, 14, 16, 17, 18, 19, 20 AND 31, AND ALL OF TRACTS 2 AND 15, BLOCK 20, TOGETHER WITH A PORTION THOSE ROAD, DYKE AND DITCH RESERVATIONS, 30 AND 50 FEET IN WIDTH, ALL ACCORDING TO THE PLAT OF PALM BEACH FARMS COMPANY PLAT NO. 3 AS RECORDED IN PLAT BOOK 2, PAGES 45 THROUGH 54, INCLUSIVE, OF THE PUBLIC RECORDS OF PALM BEACH COUNTY, FLORIDA. LYING IN SECTION 17, TOWNSHIP 44 SOUTH, RANGE 42 EAST.

SHEET 7 OF 8 MARCH, 2003



TRACT "L1"
WATER MANAGEMENT TRACT
27.114 ACRES



- LEGEND:**
- - PERMANENT REFERENCE MONUMENT, LB #6674
 - - PERMANENT CONTROL POINT, LB #6674
 - Δ - DELTA ANGLE
 - - CENTERLINE
 - BE - BUFFER EASEMENT
 - CB - CHORD BEARING
 - CH - CHORD LENGTH
 - DB - DEED BOOK
 - DE - DRAINAGE EASEMENT
 - FPL - FLORIDA, POWER AND LIGHT
 - L - ARC LENGTH
 - L.A.E. - LIMITED ACCESS EASEMENT
 - L.M.A.E. - LAKE MAINTENANCE ACCESS EASEMENT
 - L.M.E. - LAKE MAINTENANCE EASEMENT
 - L.W.D.D. - LAKE WORTH DRAINAGE DISTRICT
 - N.R. - NOT RADIAL
 - N.T.S. - NOT TO SCALE
 - OR.B. - OFFICIAL RECORD BOOK
 - P.B. - PLAT BOOK
 - PGS. - PAGES
 - P.O.B. - POINT OF BEGINNING
 - P.O.C. - POINT OF COMMENCEMENT
 - P.R.M. - PERMANENT REFERENCE MONUMENT
 - P.S.M. - PROFESSIONAL SURVEYOR AND MAPPER
 - R - RADIUS
 - RAD - RADIAL
 - R/W - RIGHT-OF-WAY
 - STA. - STATION
 - S.T. - SURVEY TIE
 - TOT. - TOTAL
 - TYP. - TYPICAL
 - U.E. - UTILITY EASEMENT
 - V.E. - VILLAGEWALK EASEMENT
 - - TRACT NUMBER (TYP.)
 - - PALM BEACH FARMS COMPANY PLAT NO. 3 P.B. 2, PGS. 45-54
 - ▲ - INDICATES ZERO SIDE FOR BUILDING
 - - INDICATES COMMON LOT LINE

P.O.C.
NORTHEAST CORNER OF LOT 14
VILLAGEWALK OF WELLINGTON - PLAT ONE
P.B. 95, PGS. 89 - 97

THIS INSTRUMENT PREPARED BY
DAVID L. SMITH, P.S.M. 4951, STATE OF FLORIDA
LAWSON, NOBLE AND WEBB, INC.
ENGINEERS PLANNERS SURVEYORS
420 COLUMBIA DRIVE, SUITE 110
WEST PALM BEACH, FLORIDA

TRACT 19
BLOCK 20
PALM BEACH FARMS
COMPANY PLAT NO. 3
(P.B. 2, PGS. 45-54)

